

“F-Course” Sailing Instructions

**Crescent Sail Yacht Club in cooperation with Great Lakes Yacht Club's
48th Annual Early Bird/Leukemia Cup Regatta
& CRAM Season Opener May 16, 2015**

Crescent Sail Yacht Club is the Organizing Authority (OA)

1. RULES

1.1 The regatta shall be governed by the rules as defined in the Racing Rules of Sailing 2013-2016 (RRS), the Notice of Race for the 2015 Great Lakes Yacht Club 16th Leukemia Cup Regatta and the and the Notice of Race issued specifically for the Catamaran Racing Association of Michigan

2. NOTICES TO COMPETITORS

Notices to competitors will be posted on the Official Regatta Notice Board at Crescent Sail Yacht Club.

3. CHANGES IN SAILING INSTRUCTIONS

Any change in the Sailing Instructions will be announced at the 9:30 am skippers meeting and posted thereafter on the Official Regatta Notice Board at Crescent Sail Yacht Club.

4. SIGNALS MADE ASHORE

4.1 Signals ashore will be displayed from a flagpole east of the CSYC main clubhouse building.

4.2 Code flag AP (Answering Pennant) raised with two sound signals (one sound when lowered) means “The race is postponed. The warning signal will be made not less than 75 minutes after AP is lowered.” This changes RRS Race Signals

5. SCHEDULE OF RACES

5.1 Racing will be held on Saturday, May 16th, 2015 for GRAM, Viper 640, Lightning, & 420 Dinghy Classes. It is the intent of the OA and the Race Committee to conduct as many races as practical. The warning for the first starting sequence is scheduled at 1100 hours EDT.

6. DIVISIONS, CLASS FLAGS AND STARTING SEQUENCE

6.1 All divisions, class flags and starting sequences will be posted on the Official Regatta Notice Board and will be available at registration

7. RACING AREAS

7.1 “F-Course” division racing circle will be located in Lake St. Clair in the vicinity of Crescent Sail Yacht Club. The radius of the “F-Course” racing circle is 0.6 nautical miles.

Crews are cautioned to allow adequate time to reach the racing area in prevailing conditions for the 1100 Warning Signal.

8. COURSES

8.1 All turning marks shall be left to port.

8.2 Mark 2 may be a Gate. In the event that one of the Gate marks is not in place, boats shall round the existing leeward Mark 2 to port.

8.3 Course 3 shall be 3 legs windward/leeward. Course 4 shall be 4 legs windward/leeward. Course 5 shall be 5 legs windward/leeward. Course 6 shall be 6 legs windward/leeward.

9. MARKS

Marks 1 and 2 will be orange inflated marks. New marks, when used in accordance with Instruction 13 “Change of Course after the Start,” will be yellow inflated marks.

10. THE START

10.1 Starts will be made in accordance with RRS 26.

10.2 The starting line will be between a staff displaying an orange flag or shape on the Race Committee Signal Boat, and the port end starting mark and will be located to leeward of Mark 2.

10.3 Boats whose warning signal has not been made shall avoid the starting area during the starting sequence for other races.

10.4 A boat starting later than five minutes after her starting signal will be scored Did Not Start (DNS) without a hearing. This changes rules A4 and A5.

10.5 After the first race of the day, it is the intention of the Race Committee to start subsequent races as soon as practicable after the last boat of each class finishes the previous race.

11. INDIVIDUAL RECALLS

The Race Committee may attempt to hail any boat recalled.

12. RETIRING FROM A RACE

Boats retiring from a race are required to inform the Race Committee before leaving the race course either by hail or on the appropriate Division VHF Radio Channel.

13. CHANGE OF COURSE AFTER THE START

13.1 To change the next leg of the course, the Race Committee will lay a new mark (or move the finishing line) and remove the original mark as soon as practicable. When in a subsequent change a new mark is replaced, it will be replaced by an original mark.

14. CHANGE OF COURSE BETWEEN STARTS

If there is a significant wind shift during a series of starting sequences, the Race Committee may signal a change of course for a class as follows: A postponement may be signaled to allow the Race Committee to reset the line. Code Flag C will be displayed. Attention to the change of course will be made by short sound signals until one (1) minute prior to the warning signal for the next class starting. The new Mark 1 will be yellow, but after a second change during the race, the changed mark will be orange. Code Flag C will continue to be displayed to each class for whom the yellow Mark 1 applies.

15. THE FINISH

15.1 The Finish Line will be between a staff displaying an orange flag or shape on a Race Committee boat and the nearby finishing mark. For Courses "3" and "5" the finish line will be located approximately 100 yards to windward of Mark 1. For Courses "4" and "6", the finish line shall be approximately 100 yards to leeward of Mark 2 (or the former location of Mark 2, if it has been removed) and the finishing mark will be placed on the side **opposite** the starting mark (see illustrations for Courses 4 & 6).

16. TIME LIMITS

16.1 The time limit for each class is 60 minutes.

16.2 Boats failing to finish within 30 minutes after the first boat in her class sails the course and finishes will be scored Time Limit Expired (TLE) without a hearing. This changes RRS 35, A4 and A5.

17. PROTESTS

17.1 A boat intending to protest is requested to report her intention and the boat(s) being protested to the Race Committee at the finish.

17.2 Protests and requests for redress or reopening shall be delivered there within the appropriate time limit.

17.3 For each class, the protest time limit is 60 minutes after the docking of the Race Committee Signal Boat for the division involved, unless the jury decides to extend the time of submission.

17.4 The times of protest hearings and the parties involved will be posted on the Official Regatta Notice Board. This posting constitutes the notice required by RRS 63.2 (Time and Place of the Hearing).

18. SCORING

18.1 One race will constitute a series. Each boat's total score shall be the sum of her scores for all races. This changes RRS Appendix A2.

18.2 Boats scored TLE will receive points equal to the number of boats finishing within the Time Limit, as described in SI 18, plus 2 points. This changes RRS 35 and A4.

19. RADIO COMMUNICATION

A boat shall neither make radio transmissions while racing, nor receive special radio communications not available to all boats.

20. COURTESY BROADCASTS

An unofficial designated observer may report all visual signals displayed by the Race Committee over VHF Channel 69. Information reported by the designated observer is provided as a courtesy to competitors and does not in any way alter the competitor's responsibility to observe the Race Committee's visual signals, which govern the conduct of the racing. Errors or omissions on the part of the designated observer will not be grounds for redress. This changes RRS 62.1(a).

21. PRIZES

21.1 Awards will be presented at approx. 4pm at Great Lakes Yacht Club, 23900 Jefferson Ave, St. Clair Shores on the day of the race. Open Bar, lawn games, RC Sailboats in the pool and hot dogs and more will be available.

21.1 Awards will be presented to the top three boats in each class.

21.2 Overall award for Top Fundraiser of Leukemia Cup registered boats will be presented.

22. COMPETITORS' CONDUCT

The skipper shall be responsible for the conduct of the crew before, during and after racing.

23. MEDIA & TELEVISION

Competitors give absolute right and permission for any photograph and video footage taken of themselves or the boat they are sailing during the event, to be published in any media whatsoever, for either editorial or advertising purposes or to be used in press information.



DETROIT YACHT CLUB
1 Riverbank Road, Belle Isle
Detroit,
www.dyc.com
313-824-1200

2015 LEUKEMIA CUP DETROIT RIVER COURSE

FRIDAY, MAY 15, 2015

SAILING INSTRUCTIONS

- RULES & AUTHORITY** – The races will be governed by *The Racing Rules of Sailing 2013-2016 (RRS)*, the prescriptions of USSA, the rules of each class, and these Sailing Instructions.
- ELIGIBILITY & REGISTRATION** - The races are open to boats sailed by skippers registered for the Great Lakes Yacht Club 2015 Leukemia Cup Regatta (go to www.yachtscoring.com to register there first, then to www.leukemicup.org/mi - both are required) and meeting the one design class specifications for the invited classes in these Sailing Instructions. Use of club-owned boats shall be governed by the club's established policies regarding eligibility and use of such boats.
- NOTICES TO COMPETITORS** – Any Notices to Competitors will be posted in one of the glass-enclosed bulletin boards on the west wall of the DYC first-floor lobby, near the exit door leading toward main dock from the switchboard, and next to the weather instrument case. In addition, a courtesy copy of changes to these Sailing Instructions and other Notices to Competitors may be posted electronically on the www.dyc.com website.
- SIGNALS MADE ASHORE** – Signals made ashore will be displayed from the DYC Main Dock.
- SAIL & POLE LIMITATIONS** – Boats in the Flying Scots class may use any sail or pole permitted under RRS or the rules applicable to the class and any club-adopted rules regarding requirements for use of boats and sails. For purposes of this race, Cal 25s and U20s and Crescents are invited to sail with jib and main only and may be permitted any pole authorized under RRS or applicable class rules when sailing JAM.

Kayaks may not use sails or poles.
- CLASSES** – Class and starts for the Detroit River Course are designated as follows:

<u>Start</u>	<u>Class</u>	<u>Class Flag</u>
1	Cal 25 (JAM)	Cal 25 Class Flag
2	U20 (JAM)	U20 Class Flag
3	Crescent (JAM)	Crescent Class Flag

4
5

**Flying Scot
Kayaks**

**Flying Scot Class Flag
DYC Kayak Club Burgee**

7. **STARTING TIMES** - A boat shall start only in the class to which it is assigned. The following are the starting times and signals:

Start No.	Time	Meaning & Sounds	Visual Signal
-	1859 hours	Attention Signal (Horn)	None
-	1900 hours	Warning Signal (Gun)	Cal 25 Class Flag up
-	1901 hours	Preparatory Signal (Horn)	"P" pennant up
-	1904 hours	One Minute Signal (Horn)	"P" Pennant down
1	1905 hours	Cal 25 Start Signal (Gun)	Cal 25 Class Flag down and U20 Class Flag up
2		Preparatory Signal (Horn) One Minute Signal (Horn) U20 Start Signal (Gun)	"P" pennant up "P" pennant down U20 Class Flag down and Crescent Class Flag up
3		Preparatory Signal (Horn) One Minute Signal (Horn) Crescent Start Signal (Gun)	"P" pennant up "P" pennant down Crescent Class Flag down and Flying Scot Class Flag up
4		Preparatory Signal (Horn) One Minute Signal (Horn) Flying Scot Start Signal (Gun)	"P" pennant up "P" pennant down Flying Scot Class Flag down
Five Minute Pause to Stage for Kayak Start			
5		Kayak Warning Signal (Horn) Preparatory Signal (Horn) One Minute Signal (Horn) Kayak Start Signal (Gun)	DYC Kayak Club Burgee up "P" pennant up "P" pennant down DYC Kayak Club Burgee down
Visual signals prevail. The Warning Signal and all subsequent signals will be in the same sequence as for start 1, but not necessarily beginning with the start of the preceding class. The Race Committee will attempt to broadcast (on channel 68 – see #16) additional information during the starting sequences. The signal sequence for all classes is as follows:			
• Five minutes prior to start		Warning Signal (Gun or sound) (Class Flag up)	
• Four minutes prior to start		Preparatory Signal (Horn)	
• One minute prior to start		One Minutes Signal (Horn)	
• Start		Starting Signal (Gun or sound) (Class Flag down)	

8. **STARTING & FINISHING LINE** - The starting and finishing line shall be between the staff of a flag with the letters "RC" which may be blue with white letters or yellow with black letters or an orange sleeve displayed from a piling on the Main Dock "T" and the upstream water's edge of a mark (Orange Tetrahedron - "*Starting Line Mark*") approximately 100 yards to the north. **All boats not within their 5-minute sequence are to stay outside the Starting Area.** The Starting Area is described as the area bounded by the **Starting Line**, an imaginary line from the "*Starting Line Mark*" to the **West End Buoy CG "RGN"**, and an imaginary line to the **downstream end of Main Dock.**

Boats sailing in starts 1, 2, 3 and 4 are directed to use caution in approaching the start/finish line and remain vigilant for kayak traffic on the race course and shall observe right of way rules at all times.

9. **COURSES** - The courses to be sailed are described and illustrated in Course Diagrams Appendix to these Sailing Instructions. **Note that boats, with the exception of Kayaks, will start going *upstream*.** Race Committee will display lettered placards designating the course to be sailed. The following indicates the possible course designations:

<u>Letter(s)</u>	<u>Course to be sailed</u>
LL	Lakewood Park Long Course
LS	Lakewood Park Short Course
BL	Bayview Long Course
BS	Bayview Short Course
EL	Edison Long Course
ES	Edison Short Course
L	Harbor Hill Long Course
S	Harbor Hill Short Course

Kayaks shall use the Kayak Course. The Kayak Course is described as follows: keeping DYC Island to port at all times, proceed downstream from the start/finish line (described in paragraph 9), rounding an orange tetrahedron at the downriver end of the DYC Island to port, then proceeding around the DYC Island and between Belle Isle and DYC through the DYC Lagoon, turning downstream at the DYC Lagoon entrance and finishing downstream at the start/finish line. No course designation placards or pennants shall be displayed for the Kayak Course.

10. **POSTPONEMENT** - A postponement of all races not yet started can be indicated in one of **two different methods** dependent on the situation. **One method** is for the Race Committee to display the Answering Pennant (pennant with vertical red and white stripes) or a cylindrical shape with vertical red and white stripes, accompanied by two guns or other sound signals. The postponement signal will be lowered (accompanied by a sound signal) approximately one minute before next signal is displayed. The next signal shall be either: (1) the Warning Signal for the next start and therefore the restarting of the sequence for all following classes, or (2) an abandonment signal (Paragraph 14).

The **second method** is for the Race Committee to simply not raise the Class Flag for the next starting class, thereby postponing all of the following classes. When the Race Committee wishes to resume the sequence, they would simply raise the Warning Pennant with a sound (warning signal for that class) and the Class Flag to continue the sequence. The committee will attempt to have delays a multiple of five minutes.

11. **SHORTENED COURSE** – If a committee boat is positioned near the Roostertail buoy displaying a “**S**” **Shape, Placard or Flag (White with Blue square) with two sounds**, all boats are to round that mark leaving it on their port side and proceed directly to the ‘Finish Line’. Boats are to finish downstream in the opposite direction as they started, passing the Starting Line RC Flag on the dock to port and the “Starting Line” mark to Starboard.

The Short Courses and Kayak Course will not be shortened.

12. **ABANDONMENT(S)** - Flag "N" or a cylindrical shape, accompanied by *three* guns or other sound signals, means: “*All races are abandoned, no more racing today.*” If a Yacht abandons or withdraws from a race under her own volition, the retiring yacht is to inform the Race Committee of her withdrawal as soon as possible.
13. **TIME LIMITS** – The RRS 35 is hereby modified as follows. If no boat finishes the course within 90 minutes of her start, the race for that class shall be deemed abandoned. If one boat in a class finishes within the applicable 90 minutes, the race shall stand for all other boats in her class. The Race Committee will record finishes for boats finishing within 30 minutes of the first finisher in that class.
14. **RADIO MONITORING** – **For safety reasons on the race course, all boats, including kayaks, are requested to have a VHF radio and are expected to monitor channel 68 from before their preparatory signal until they reach their mooring after finishing.**
15. **PROTESTS** – A Protesting Yacht is to notify the Race Committee of their intention to protest within 15 minutes of their crossing the finish line or retiring from the race. The time limit for submitting a written protest to the Race Committee shall be 60 minutes after the protesting boat has notified the Committee of their intention to protest. Protests are to be filed at the DYC Reception Counter - Main Lobby and with the PRO for the day. Protest hearings shall be held as indicated in the GLYC Leukemia Cup Sailing Instructions for May 16, 2015.
16. **AWARDS** – Awards for races held on the Detroit River Course shall be presented at the Leukemia Cup awards party on Saturday, May 16 at Great Lakes Yacht Club. Skippers, crew and spectators are welcome to enjoy DYC facilities on Friday evening during and following the race.
17. **INTERFERENCE WITH SHIPPING** - When crossing a shipping channel, boats shall not interfere with major ships (Federal Law 89-764). Participants at all times shall abide by USCG Rule 18, which reads in part: "(b) A sailing vessel underway shall keep out of the way of: ... (ii) a vessel restricted in her ability to maneuver." Any

boat that violates these provisions shall be subject to protest and disqualification. Boats may use their engines to stay clear of commercial shipping. However, in doing so they may not better their position in the process.

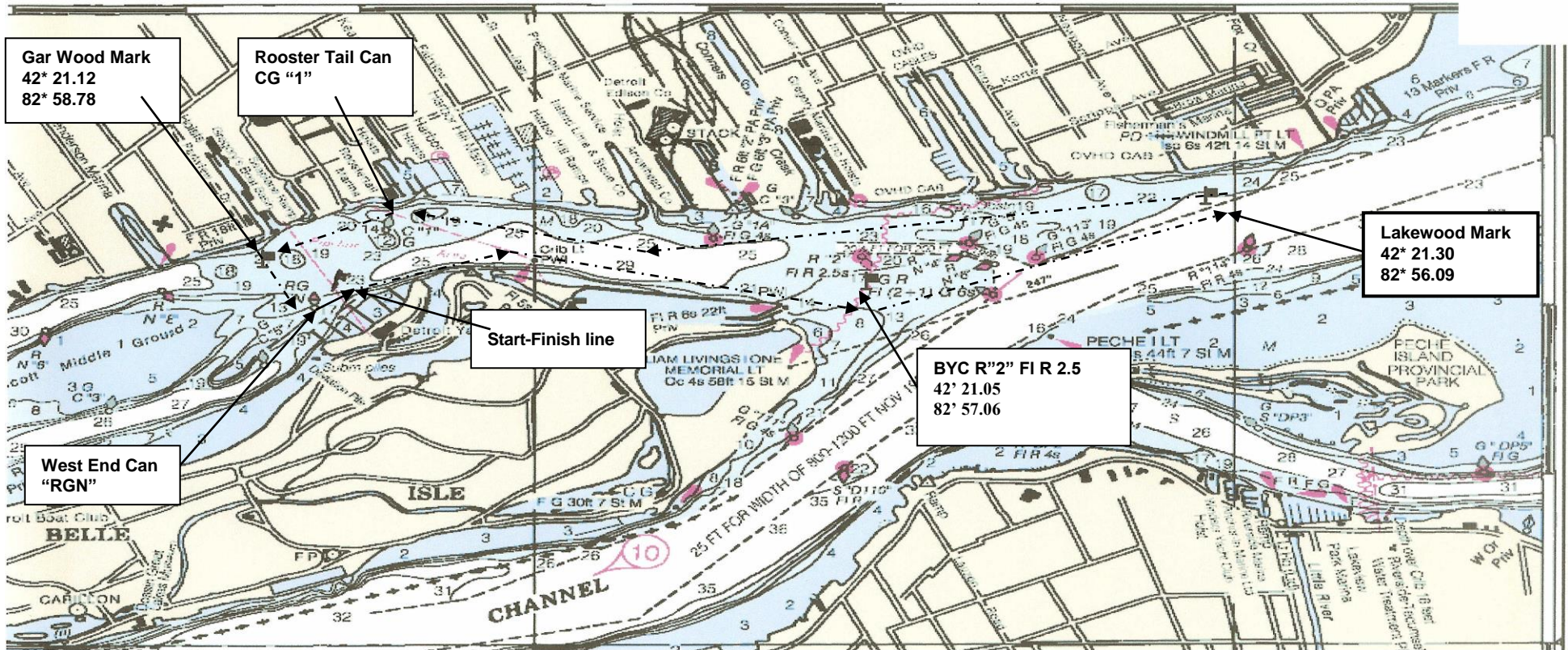
18. **ASSUMPTION OF RISK** - By participating in this race, each person aboard as skipper, crew or otherwise (a) acknowledges that racing sailing boats has certain inherent risks and can be a dangerous activity and (b) nevertheless voluntarily assumes all such risks, and waives any and all claims that he or she may have for damages of any kind against the DYC, it's race committee or any officer, director, member, employee or agent of the DYC, arising out of or related to his or her participation in any such race. The skipper and crew shall be responsible for deciding whether to start or to continue to race. Each boat is to have valid insurance covering liability and property damage.

19. **SAFETY & SAFETY EQUIPMENT** – Any boat participating in the race shall be seaworthy in hull, rigging and gear and sailed by one or more person(s) competent to sail in an event of this kind. Safety Equipment - The skipper of a participating boat acknowledges that he or she is aware of the safety equipment required by the United States Coast Guard to be carried aboard the boat and accepts full responsibility for deciding what additional safety equipment is necessary for the safety of the boat and crew under the circumstances. Although failure to adhere to this requirement is not protestable in this race, the skipper shall insure that all such required and additional equipment will be aboard, in accessible locations and in good working order, and the skipper shall assure that each member of the crew and any others aboard during this race know the location and proper use of all such equipment.

APPENDIX to 2015 Leukemia Cup **DYC DETROIT RIVER COURSE SAILING INSTRUCTIONS - COURSE DIAGRAMS**

Except as stated in the Sailing Instructions, none of the aids to navigation shown in the diagram *are considered marks of the course*. *These diagrams are not to be used for navigation.*

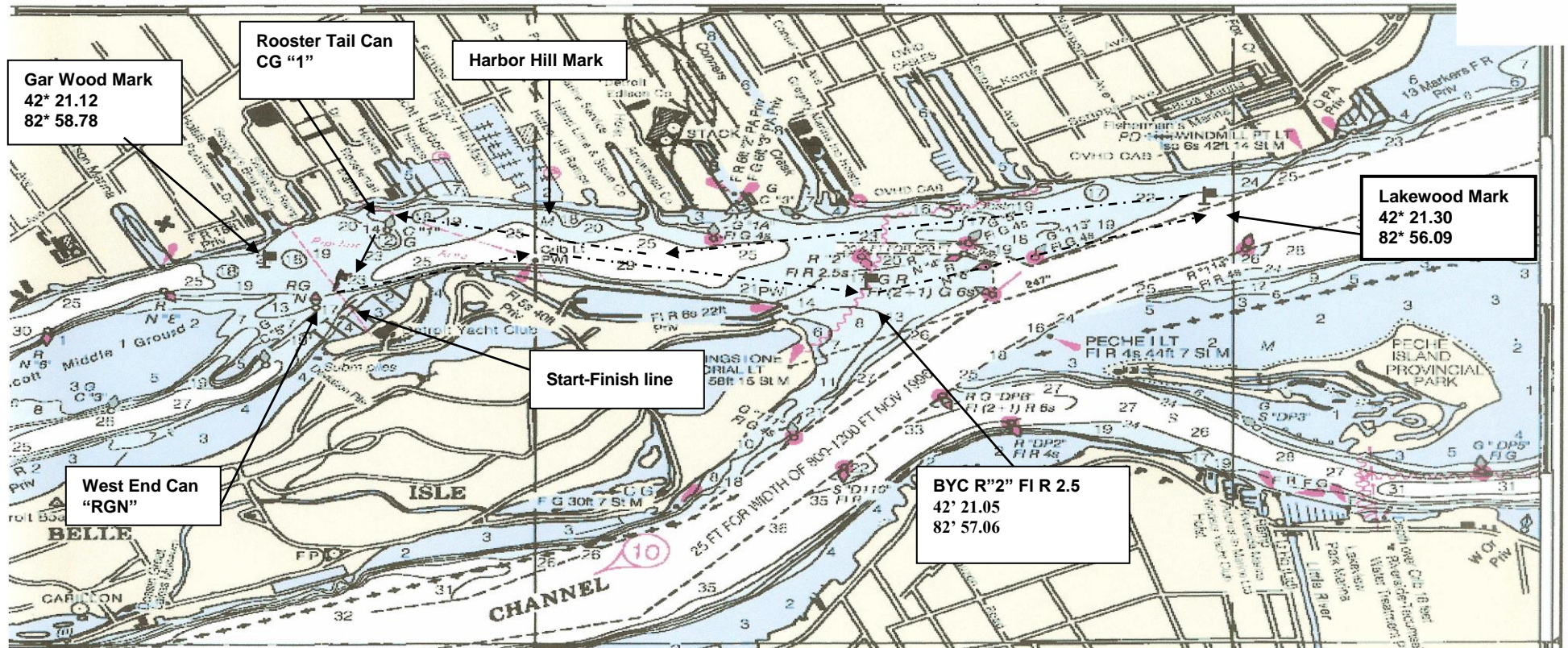
Lakewood Park Long Course – From the starting line (passing the Starting Line RC Flag on Main Dock to starboard and the Starting Line Mark to port) to a **tetrahedron** approximately **1/10 nm south of Buoy R “2”FI R 2.5s** near Bayview Yacht Club. Pass that mark leaving it on your port side and proceed to a tetrahedron positioned approximately 100 yards off shore & just downstream of the entrance to the canal next to Lakewood Park. Round that mark leaving it on your port side and proceed to the **Buoy CG “1”** (Roostertail Mark) near the Roostertail, leaving (passing) that buoy leaving it on your port side. Continue downstream to a **tetrahedron** positioned approximately 100 yards from shore and downstream of the ‘Gar Wood Judges Stand’ passing that mark to port. The next mark is the **West End Buoy CG “RGN”** which is to be left to port. Proceed upstream crossing the Finish Line, which will be the same as was the Starting Line passing the Starting Line RC Flag to starboard and the Starting Line Mark to port. This course is approximately 4.2 nautical miles. If this race is “shortened it will be 3.6 nautical miles (See Lakewood Park Short Course).



APPENDIX to 2015 Leukemia Cup **DYC DETROIT RIVER COURSE SAILING INSTRUCTIONS**

Except as stated in the Sailing Instructions, none of the aids to navigation shown in the diagram are considered marks of the course. These diagrams are not to be used for navigation.

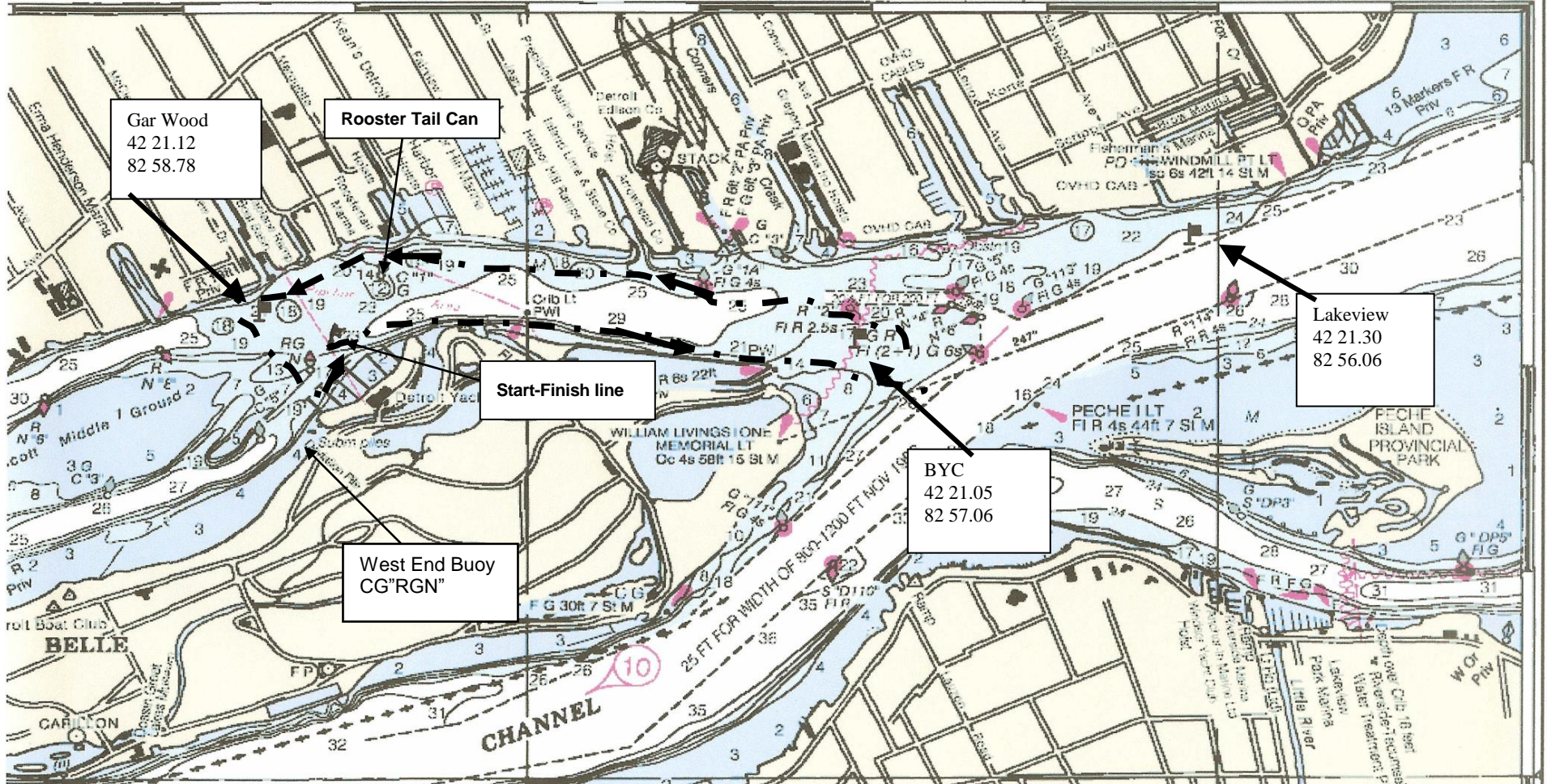
Lakewood Park Short – From the starting line (passing the RC Flag on Main Dock to starboard and the Starting Line Mark to port) to a **tetrahedron**) approximately **1/10 nm south of Buoy R “2”FI R 2.5s** near Bayview Yacht Club. Pass that mark leaving it on your port side and proceed to a tetrahedron positioned approximately 100 yards off shore & just downstream of the entrance to the canal next to Lakewood Park. Pass that mark leaving it on your port side and proceed to the **Buoy CG “1”** (Roostertail Mark) near the Roostertail, passing (rounding) that buoy leaving it on your port side. Proceed from there to the Finish Line, passing the Starting Line RC Flag to port and the Starting Line **Tetrahedron** to Starboard, finishing downstream in the opposite direction as you started. This course is approximately 3.6 nautical miles.



APPENDIX to 2015 Leukemia Cup **DYC DETROIT RIVER COURSE SAILING INSTRUCTIONS**

Except as stated in the Sailing Instructions, none of the aids to navigation shown in the diagram are considered marks of the course. These diagrams are not to be used for navigation.

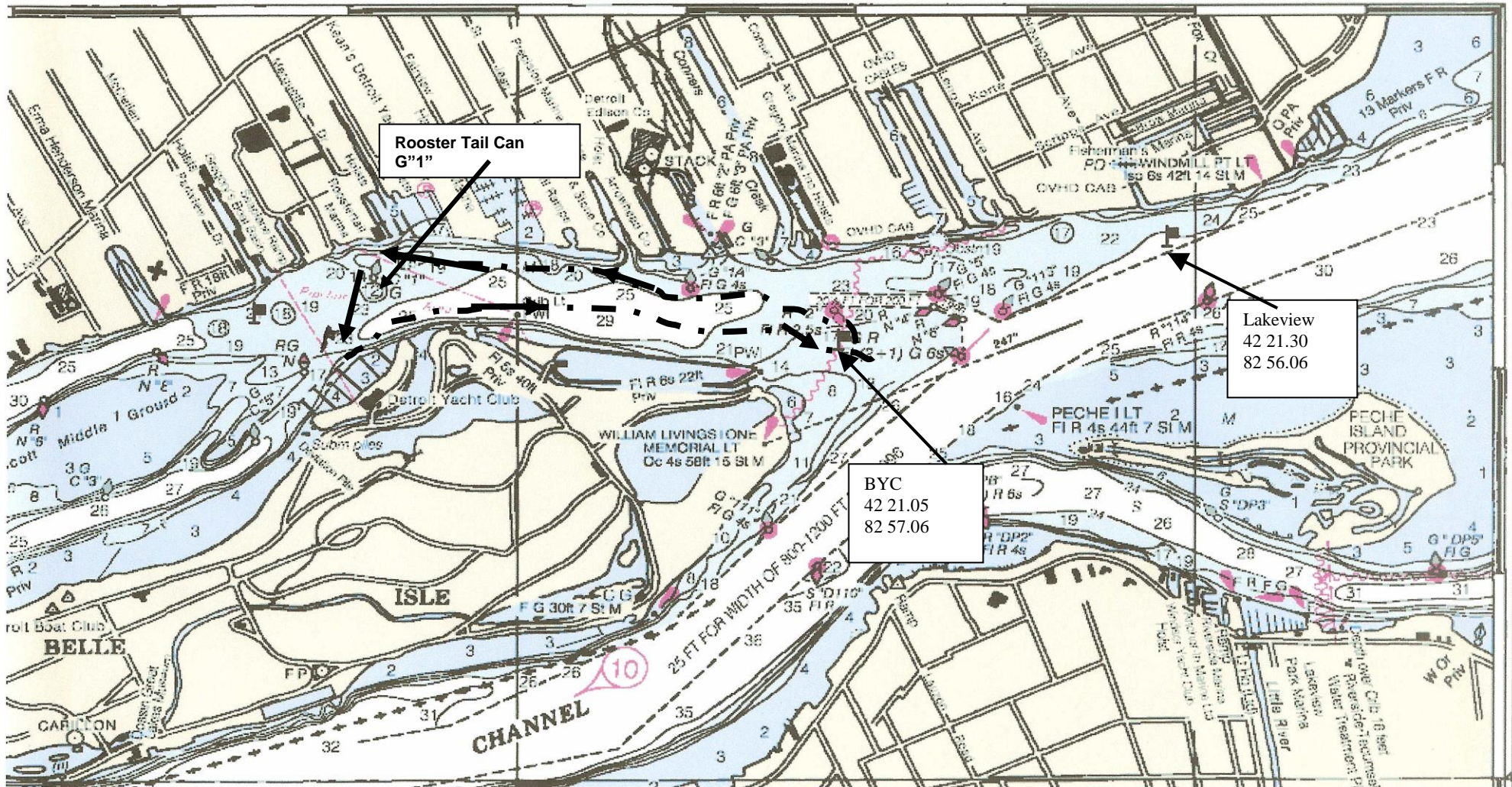
Bayview Long Course – From the starting line (passing the RC Flag on Main Dock to starboard and the Starting Line Mark to port) to a **tetrahedron** approximately **1/10 nm south of Buoy R “2”FI R 2.5s** near Bayview Yacht Club. Round that mark leaving it on your port side and proceed to the **Buoy CG”1”** near the Roostertail, passing that buoy leaving it on your port side. Continue downstream to a **tetrahedron** positioned approximately 100 yards from shore and downstream of the ‘Gar Wood Judges Stand’ passing (rounding) that mark leaving it on your port side. The next mark is the **West End Buoy CG “RGN”** which is to be rounded leaving it to port. Then proceed upstream crossing the Finish Line, which will be the same as was the Starting Line passing the RC Flag to starboard and the Starting Line **tetrahedron** Mark to port. This course is approximately 2.7 nautical miles.



APPENDIX to 2015 Leukemia Cup **DYC DETROIT RIVER COURSE SAILING INSTRUCTIONS**

Except as stated in the Sailing Instructions, none of the aids to navigation shown in the diagram are considered marks of the course. These diagrams are not to be used for navigation.

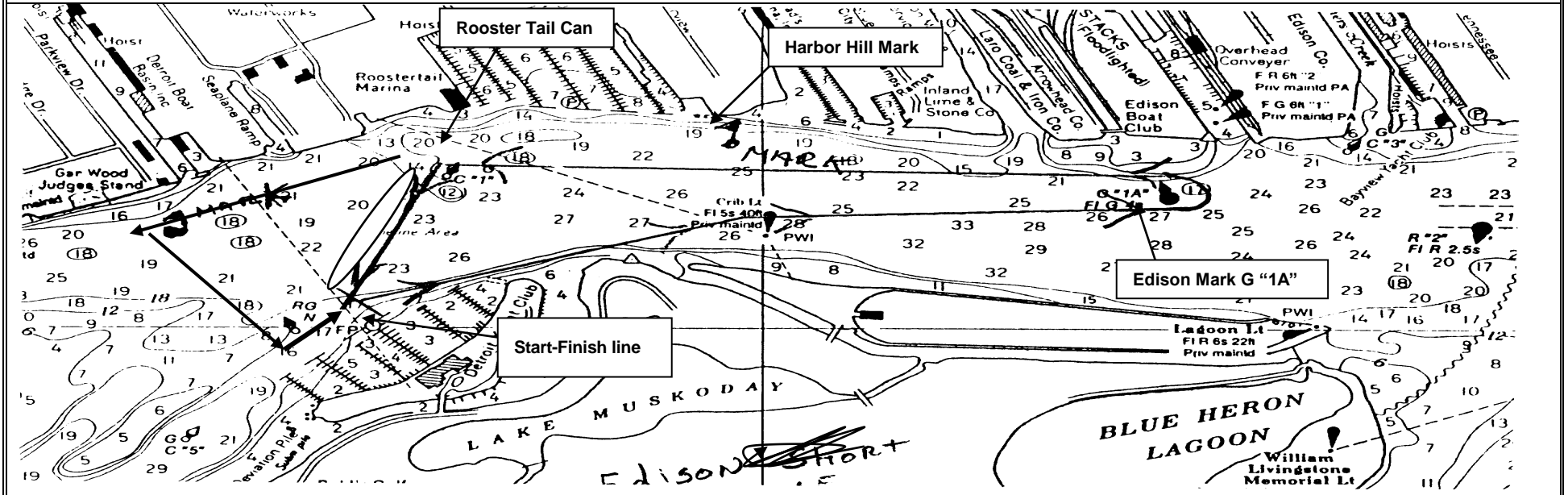
Bayview Short Course – From the starting line (passing the RC Flag on Main Dock to starboard and the Starting Line Mark to port) to a **tetrahedron** approximately **1/10 nm south of Buoy R “2”FI R 2.5s** near Bayview Yacht Club. Round that mark leaving it on your port side and proceed to the **Buoy CG”1”** near the Roostertail, passing (rounding) that buoy leaving it to your port side. Then proceed from there to the Finish Line, passing the Starting Line RC Flag to port and the Starting Line **tetrahedron** to Starboard, finishing downstream in the opposite direction as you started. This course is approximately 2.1 nautical miles.



APPENDIX to 2015 Leukemia Cup **DYC DETROIT RIVER COURSE SAILING INSTRUCTIONS**

Except as stated in the Sailing Instructions, none of the aids to navigation shown in the diagram are considered marks of the course. These diagrams are not to be used for navigation.

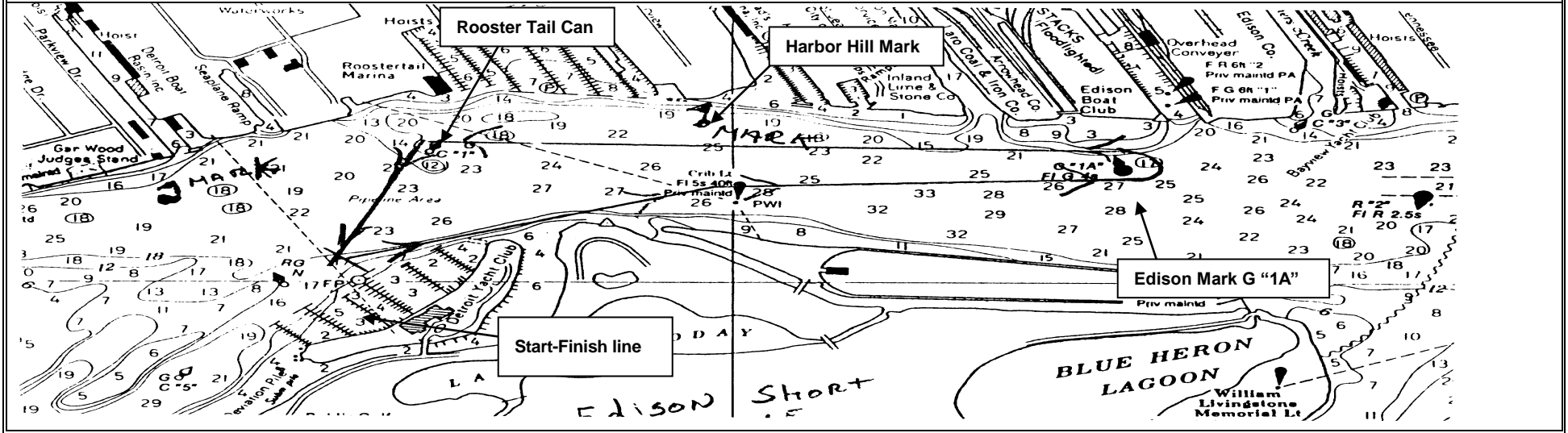
Edison Long Course – From the starting line (passing the RC Flag on Main Dock to starboard and the Starting Line tetrahedron to port) to **Buoy G “1A” FI G 4s** off Edison Boat Club. Round that mark leaving it on your port side and proceed to the **Buoy CG”1”** near the Roostertail, passing (rounding) that buoy to port. Continue downstream to a **Mark (tetrahedron)** positioned approximately 100 yards from shore and downstream of the ‘Gar Wood Judges Stand’ passing (rounding) that mark leaving it on your port side. The next mark is the **West End Buoy CG “RGN”** which is to be rounded leaving it to port. Then proceed upstream crossing the Finish Line, which will be the same as was the Starting Line passing the Starting Line RC Flag to starboard and the Starting Line Mark to port. This course is approximately 2.1 nautical miles.



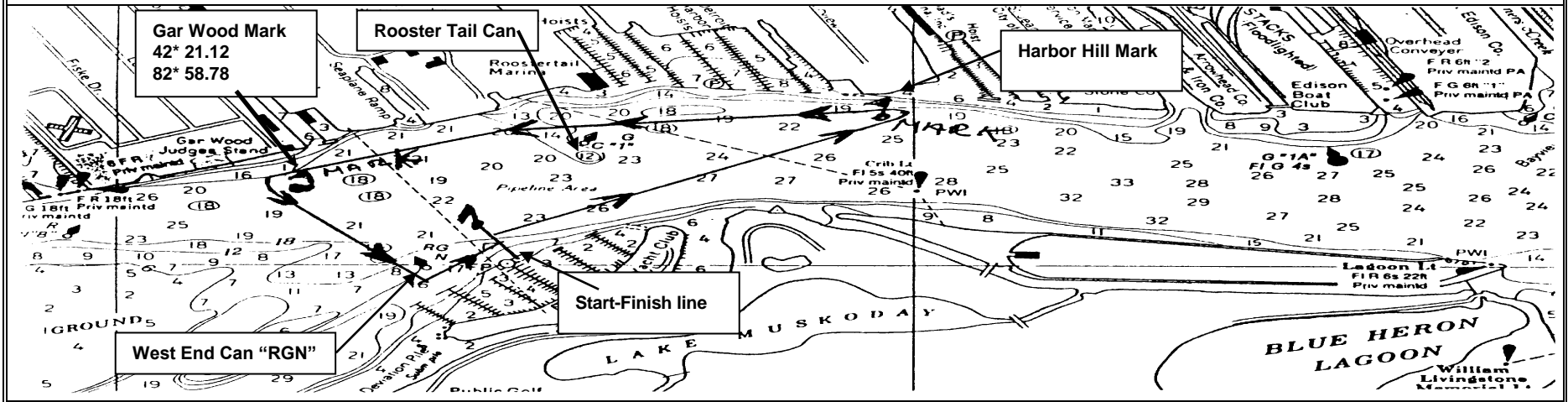
APPENDIX to 2015 Leukemia Cup **DYC DETROIT RIVER COURSE SAILING INSTRUCTIONS**

Except as stated in the Sailing Instructions, none of the aids to navigation shown in the diagram are considered marks of the course. These diagrams are not to be used for navigation.

Edison Short Course – From the starting line (passing the RC Flag on Main Dock to starboard and the Starting Line Mark to port) to **Buoy G "1A" FI G 4s** off Edison Boat Club. Round that mark leaving it on your port side and proceed to the **Buoy CG "1"** near the Roostertail, passing (rounding) that buoy to port. Then proceed from there to the Finish Line, passing the Starting Line RC Flag to port and the Starting Line **tetrahedron** to Starboard, finishing downstream in the opposite direction as you started. This course is approximately 1.5 nautical miles.



Harbor Hill Long Course - From the starting line (passing the RC Flag on Main Dock to starboard and the Starting Line Mark to port) to a **Mark (flag or tetrahedron)** positioned approximately 100 yards off shore of the Harbor Hill entrance. Round that mark leaving it on your port side and proceed to the **Buoy CG"1"** near the Roostertail, passing that buoy on your port side. Continue downstream to a **Mark (tetrahedron)** positioned approximately 100 yards from shore and downstream of the 'Hydroplane Judges Stand' passing (rounding) that mark leaving it on your port side. The next mark is the **West End Buoy CG "RGN"** which is to be left (rounded) leaving it on your port side. Then proceed upstream crossing the Finish Line, which will be the same as was the Starting Line passing the Starting Line RC Flag to starboard and the Starting Line Mark to port.



Harbor Hill Short Course - From the starting line (passing the RC Flag on Main Dock to starboard and the Starting Line Mark to port) to a **Mark (tetrahedron or flag)** positioned approximately 100 yards off shore and just down stream from the Harbor Hill Entrance. Round that mark leaving it on your port side and proceed to the **buoy CG"1"** near the Roostertail, passing (rounding) that buoy leaving it to port. Then proceed from there to the Finish Line, passing the Starting Line RC Flag to port and the Starting Line Flag/Buoy/Tetrahedron to Starboard, finishing downstream in the opposite direction as you started.

